



43 Mare Street, London, E8

BUTLER & STAG



A truly stunning and wonderfully bright one bedroom apartment set on the 6th floor of this modern apartment nestled between London Fields, Broadway Market and the Regents Canal. *Heating & hot water bills included*



- Stunning Apartment
- 6th Floor With Lift
- Contemporary Finish
- Great Transport Links
- One Double Bedroom
- Full-Width Private Balcony
- Moments From Victoria Park & London Fields
- Secure Modern Development

Boasting bright interiors the property comprises an open plan kitchen/diner and living space with access to a private balcony running the width of the apartment and French doors with a further "Juliet style" balcony allowing for far reaching views and a wealth of natural light. Further comprising a double bedroom with fitted wardrobes, contemporary bathroom and useful storage spaces.

Ideally located for access to the cafes, bars, restaurants and boutique shops of both Victoria Park Village and Broadway Market. The Regents Canal and open green spaces of Victoria Park are just moments away. Transport links include nearby Cambridge Heath and London Fields (National Rail), Bethnal Green underground station (Central Line) and a number of bus links allowing for swift and direct access to the City and West End.

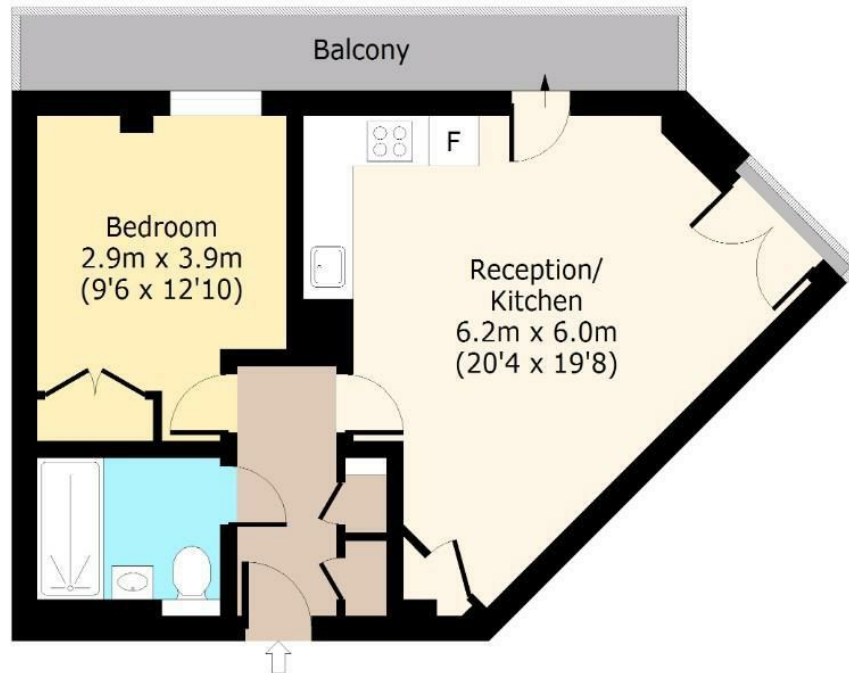




Cordwainer House, E8

Sixth Floor

Approx. 46 Sq. meters (495 Sq. feet)



Total area: approx. (Including Balcony) 53 Sq. meters (571 Sq. feet)

Total area: approx. (Excluding Balcony) 46 Sq. meters (495 Sq. feet)

For illustration purposes only - not to scale

www.lpaplus.com

IMPORTANT NOTICE - These particulars have been prepared in good faith and they are not intended to constitute part of an offer or contract. We have not performed a structural survey on this property and the services, appliances and specific fittings have not been tested. All photographs, measurements, floor plans and distances referred to are given as a guide and should not be relied upon.

BUTLER & STAG

☎ 020 8102 1236

🏠 508 Roman Road, Bow, London, E3 5LU

✉ bow@butlerandstag.com

www.butlerandstag.uk